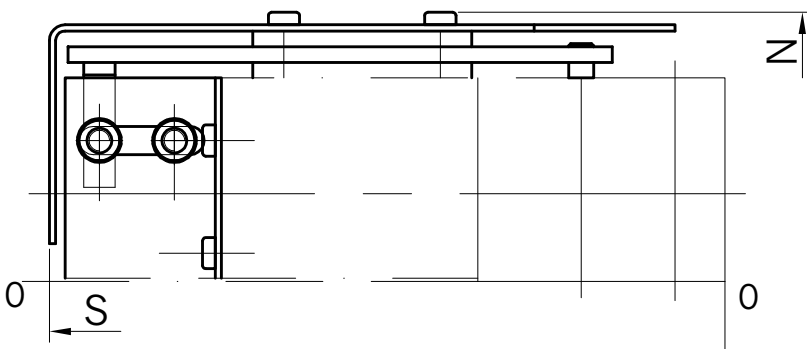




TBH clamp

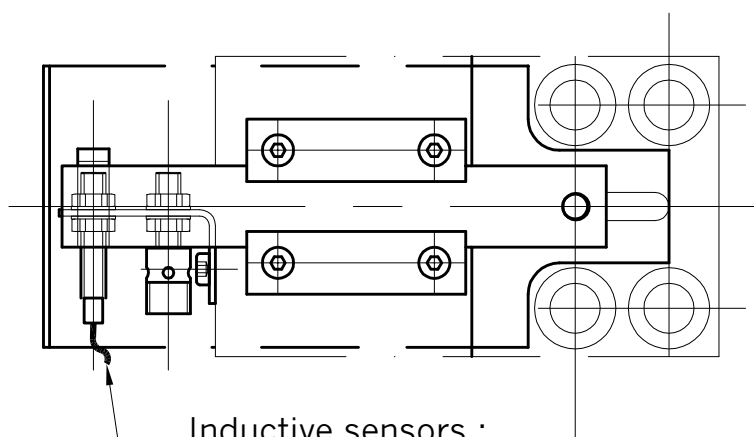
- The TBH clamp is a double acting clamp for use on bolster or ram.
- Clamping and unclamping strength is given by hydraulic pressure.
- die sides needs to be slanted 20°.
- This clamp is unsuitable for applications in wich the die is subject to shock due to jamming risks when opening clamp. Use TBHS model (refer to G080-03).



options :

- \* mounting with sensors
  - the clamp can be fitted with 2 inductive sensors ISO M8x50 for position control.
  - standard sensors : XS1 M08DA210 Télémécanique.
  - other models on request.

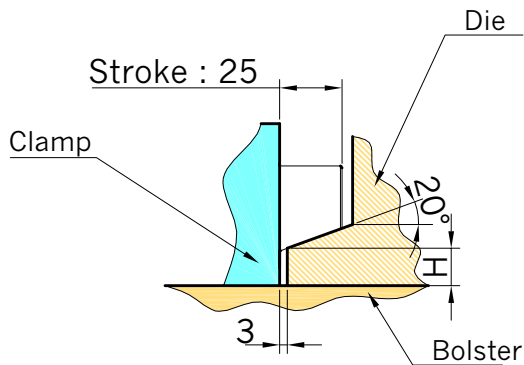
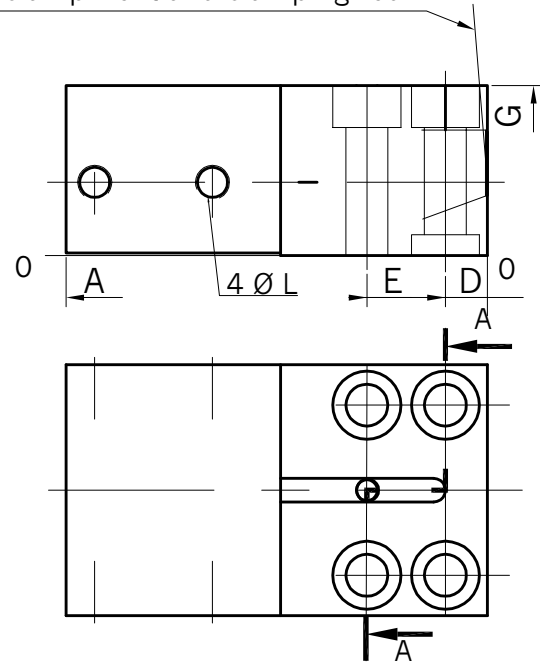
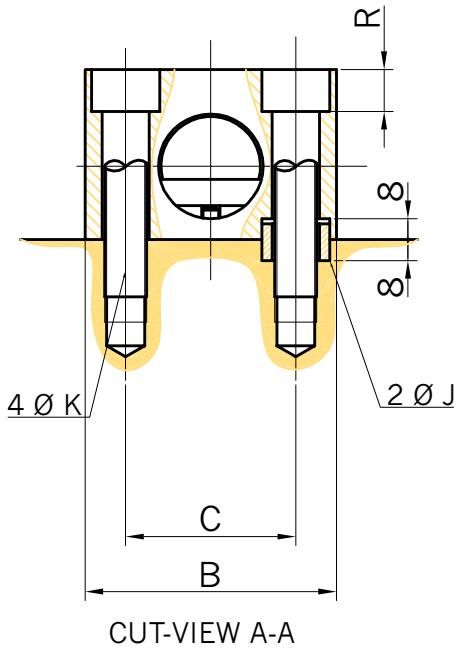
- \* viton seals for high temperature work  $70^{\circ}\text{C} < T < 190^{\circ}\text{C}$ .



Inductive sensors :  
ISO M8x50

slant 4° on clamp front and clamping rod

Jun-02



Hydraulic port can also be UNF 7/16" for TBH25 or UNF 9/16" for TBH55 & TBH100 .

	TBH 25	TBH 55	TBH 100
M (kg)	3.3	7.5	11.7
Vmax (cm <sup>3</sup> )	10	31	45
F/R (l/mn)	0.85	1.75	2.5
Pn (bar)	400	400	400
F (kN)	25	55	100
A	125	160	193
B	72	96	118
C	50	65	84
D	13	16	19
E	38	46	58
G	47	65	79
H	15	18	26
J	Ø18	Ø26	Ø30
K	M10	M16	M20
L	1/8"	1/4"	1/4"
R	10	16	20
N	68	86	100
S	172	207	240

ordering reference : TBH XX or TBH XX-DET for models with sensors

XX: strength in kN

standards sensors : XS1M08DA210

If you need other models of sensors, please consult us first.