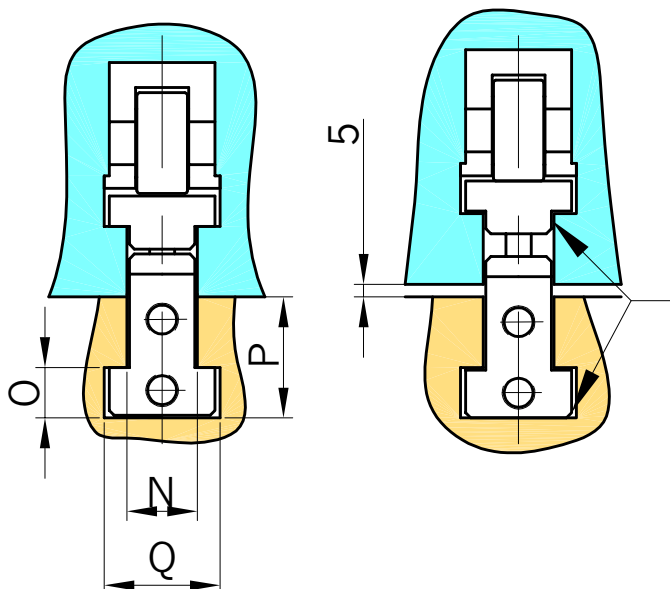




LSHP28 LEDGE CLAMP

- LSHP28 clamp allow tightening of dies using all bolster. It's also used as a rolling path for GP30 rollers (refer to sheet 070-05) in raised position.
- Clamping and lifting strength is provided by hydraulic pressure.
- Use two matching DIN 650 T28 slots in bolster and die.

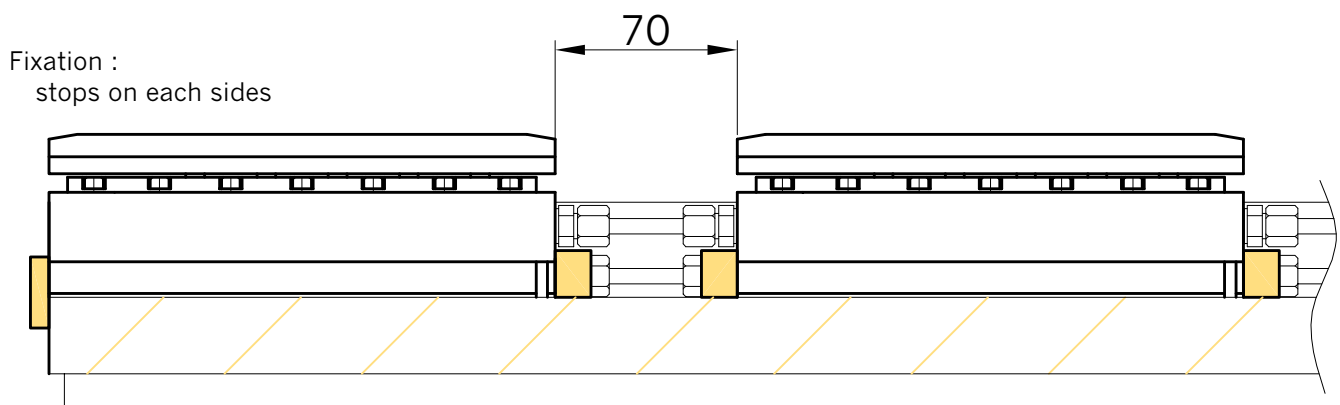


DIN 650 T-slots

DIN 650 slot T28

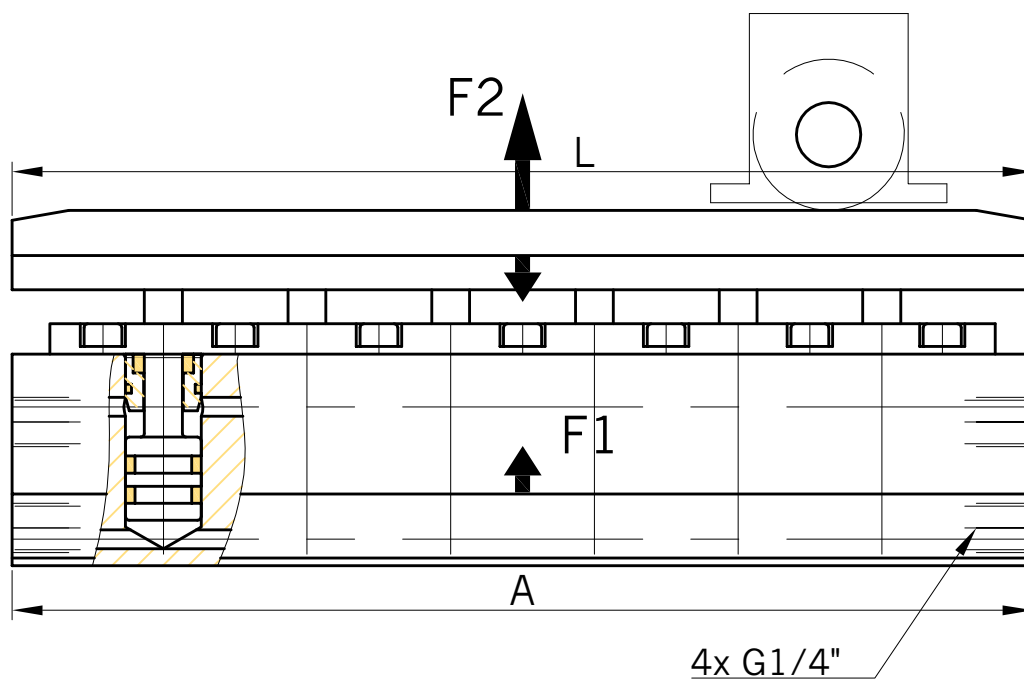
N	18	22	24	28	36
O	12	16	18	20	25
P	30	38	42	48	60
Q	30	37	42	46	56

True sizes of slots must be checked and specified when ordering if they are not the same as standard.



Refer to G070-05 pour layout and use with GP30 rollers.

LSHP28 clamps must be stopped in translation in the slot (and not fixed), by mean of wedges. When coupling 2 bars or more, they must be blocked individually, so that no strain is applied on piping.



Hydraulic port can also be UNF 9/16".

LSHP 28		
A	270	620
M (kg)	5.4	13.5
Vmax (cm ³)	13	32.5
F/R (l/mn)	3.3	8.2
F1 (kN)	56	140
F2 (kN)	28.6	71.5
L	270	620
Pn (bar)	400	

ordering reference : LSHP28 L Z example LSHP28-270

L: length Z: S for non standard slot size (drawing needed) , hydraulic port sizes