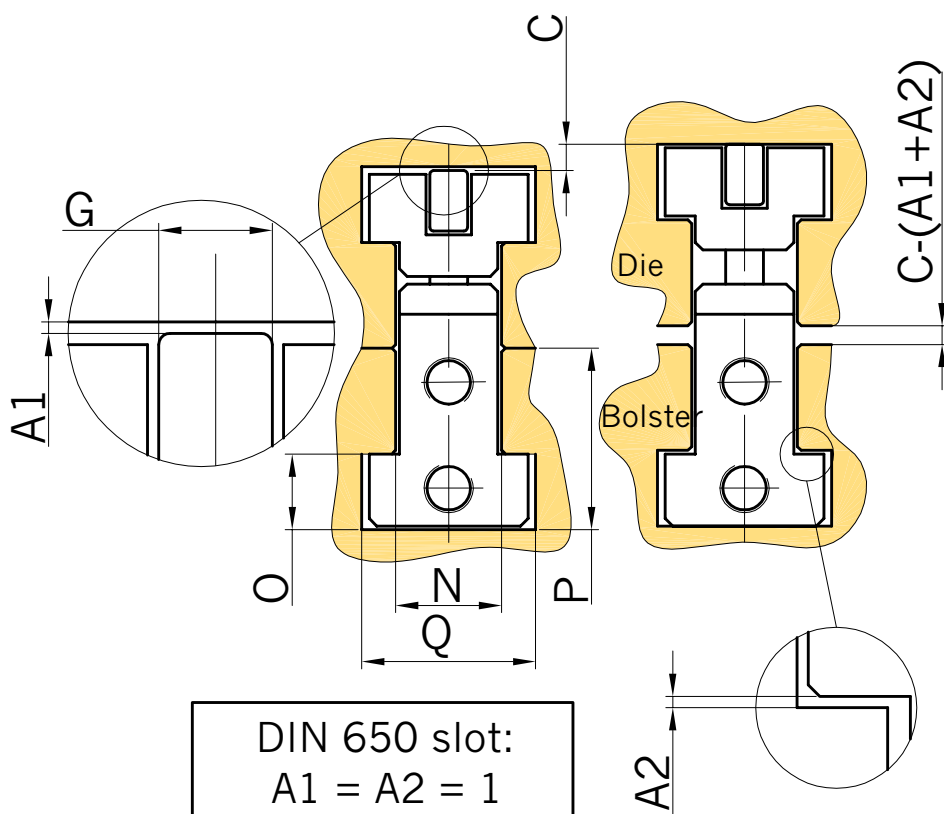




LSGH CLAMP

- LSGH clamp allow tightening of dies using all bolster area. It's also used as a roller bar in raised position.
- Clamping and lifting strength is provided by hydraulic pressure.
- Use two matching DIN 650 slots in bolster and die.

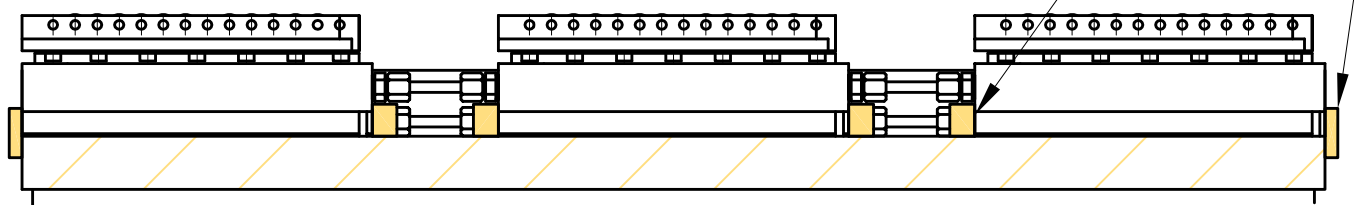


DIN 650 T-slots

N	18	22	24	28	36
O	12	16	18	20	25
P	30	38	42	48	60
Q	30	37	42	46	56

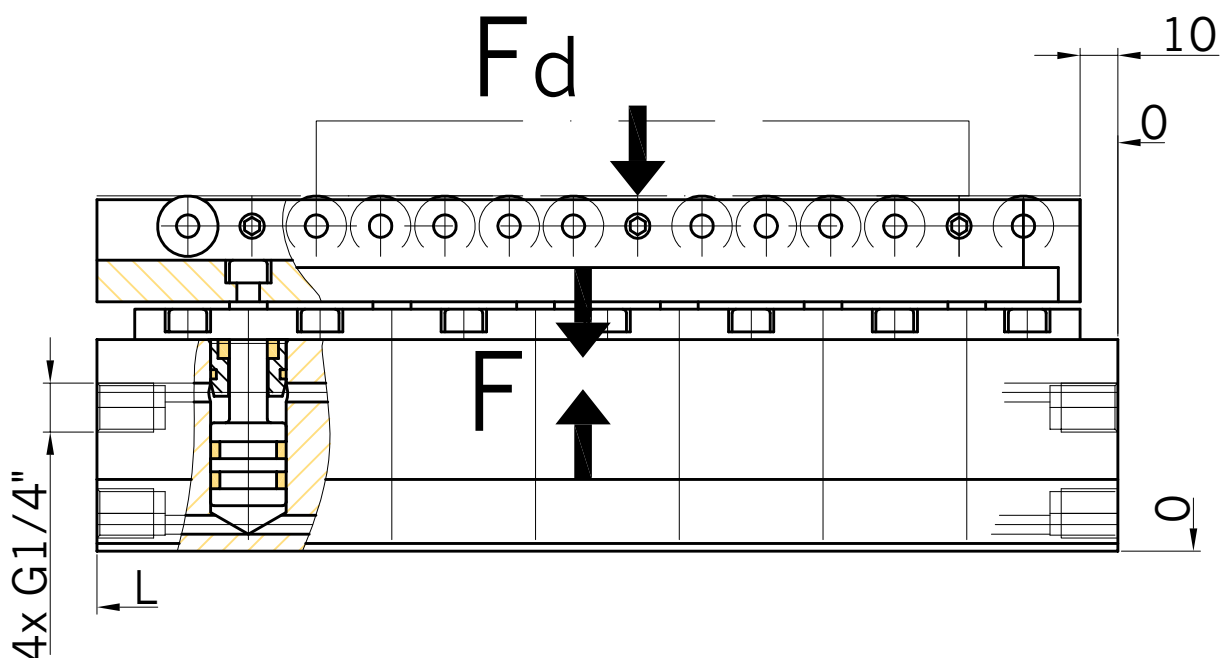
True sizes of slots must be checked and specified when ordering if they are not the same as standard.

Wedges



LSGH clamps must be stopped in translation in the slot (and not fixed), by mean of wedges. When coupling 2 bars or more, they must be blocked individually, so that no strain is applied on piping.

We can manufacture for non DIN slots, please consult us.



Hydraulic port can also be UNF 9/16\".

	LSGH 22	LSGH 28		LSGH 36
L (mm)	180	270	620	340
M (kg)	3	5.4	13.5	8
Vmax (cm ³)	4	13	32.5	29
F/R (l/mn)	2.1	3.3	8.2	6
F (kN)	24	56	140	110
F _d (kN)	9.1	28.6	71.5	52.5
P _n (bar)	400	400		400
G	Ø12x10	Ø16x12		Ø20x16
C (mm)	5	7		8

ordering reference : LSGH XX-L Z example LSGH 28-270

XX: Slot size DIN 650 L: length Z: S for non standard slot size (drawing needed) , hydraulic port sizes