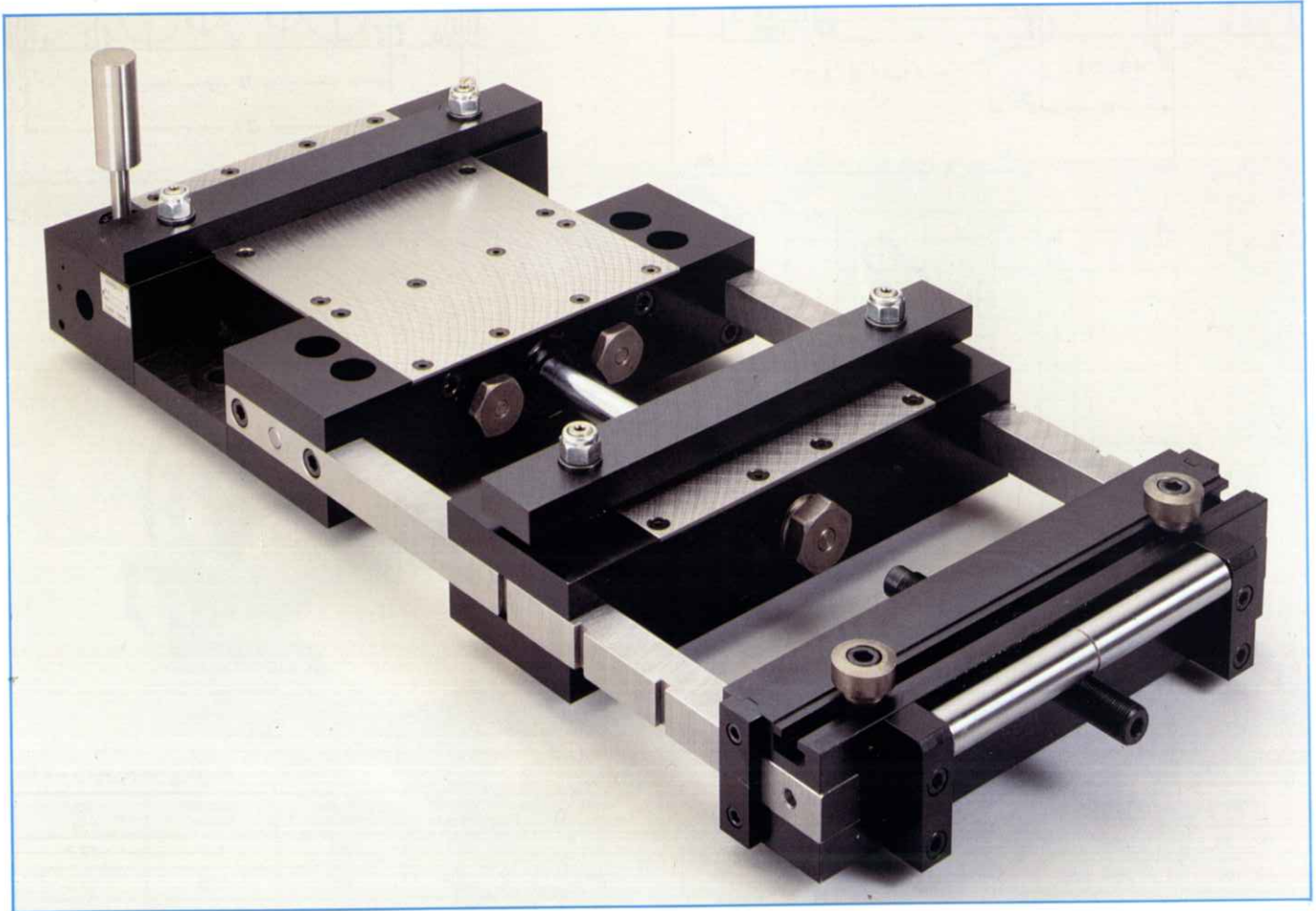
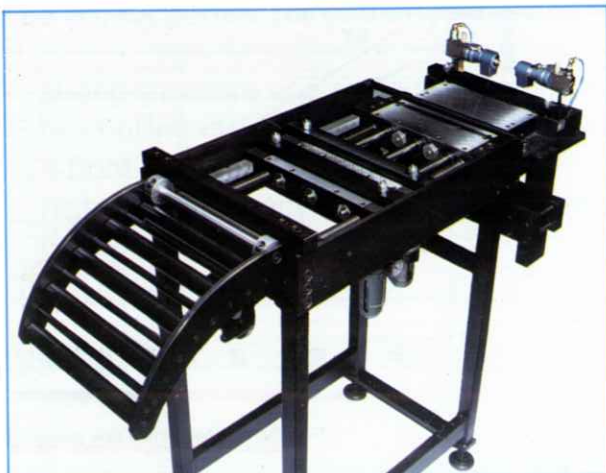


HEAVY-DUTY SERIES

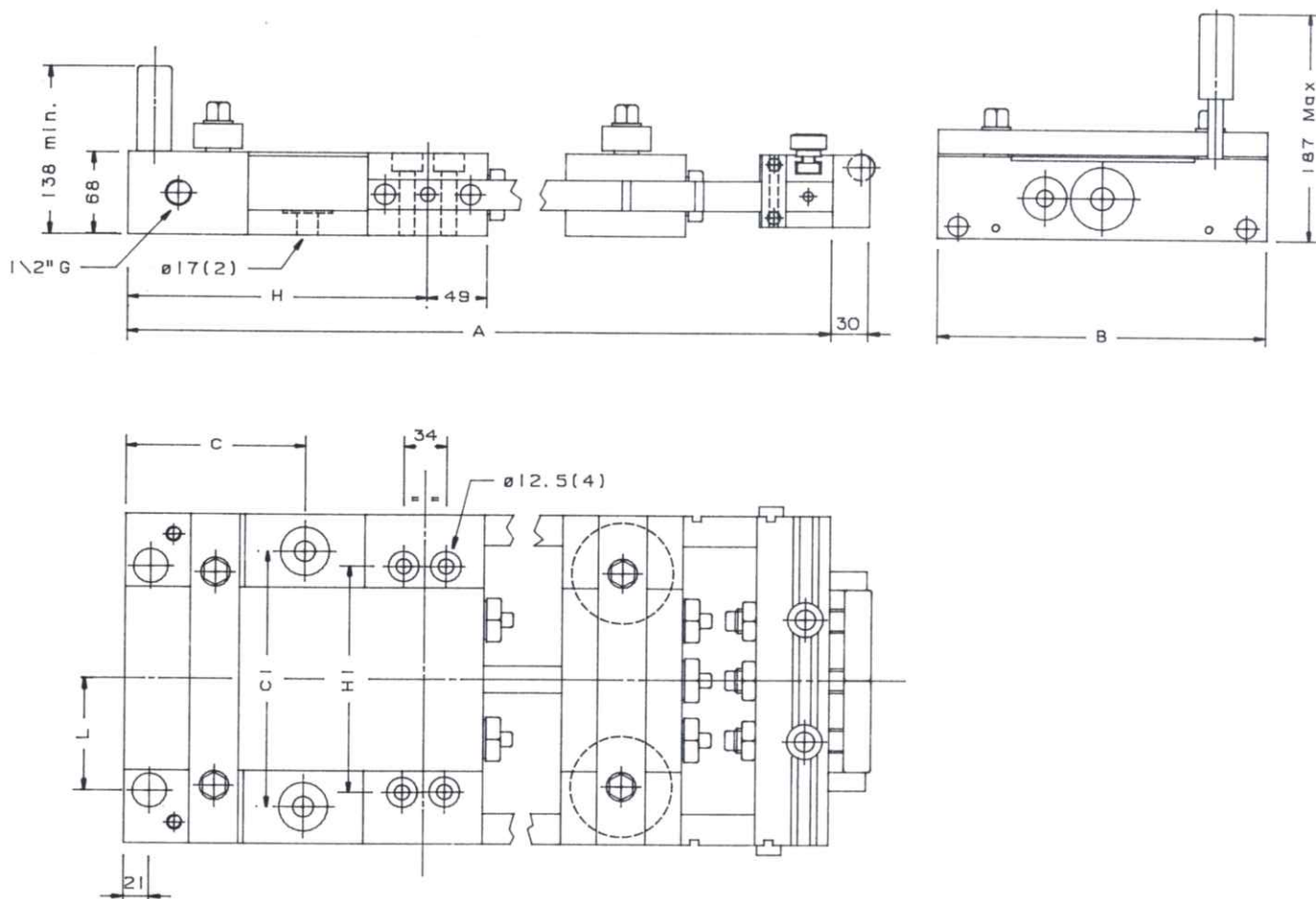


- Simple use and operation.
- Compact structure.
- High power and accuracy with a small space requirement.
- There are three ways of control:
 - directly from the die or the ram of the press with a mechanical valve;
 - with an electric valve from the cam of the press;
 - with a pneumatic valve from the cam of the press.
- Pilot release available for each type.



The heavy-duty series may be equipped with:

- adjustable support body with safety guard;
- connecting block with both horizontal and vertical adjustment, so that the feeder can be placed as near as possible to the die set;
- roller conveyor;
- filter-lubricator;
- rapid stroke device with handle;
- three way valve to release air.



Technical features

Working pressure: 5 ÷ 8 bar

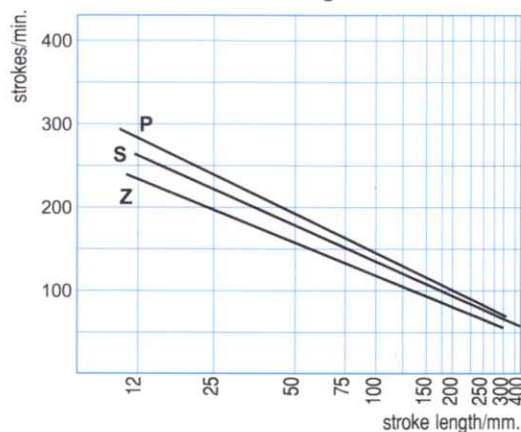
TYPE	Max. strip Width mm.	Stroke mm.	Strip thickness mm.	Cycles min.	Pressure of fixed clamps Kg.	Pressure of mobile clamps Kg.	Traction force Kg.	Consumption litres/min.	Weight Kg.
P1	155	100	3.8	140	126	604	108	184	32
P2	155	200	3.5	120	126	604	108	314	39
P3	155	300	3.0	70	126	604	108	275	46
S1	205	100	3.0	130	126	604	108	170	38
S2	205	200	3.0	110	126	604	108	288	45
S3	205	300	3.0	70	126	604	108	275	54
Z1	305	100	3.0	120	126	604	108	158	48
Z2	305	200	3.0	95	126	604	108	249	58
Z3	305	300	2.5	60	126	604	108	235	69

The number of cycles/min. was calculated at 6 bar air pressure and with no material on the feeder.

Dimensional characteristics

TYPE	A	B	C	C ₁	H	H ₁	L
P1	478	270	—	—	147	185	92
P2	676	270	147	210	245	185	92
P3	874	270	196	210	343	185	92
S1	478	320	—	—	147	235	117
S2	676	320	147	260	245	235	117
S3	874	320	196	260	343	235	117
Z1	478	420	—	—	147	335	167
Z2	676	420	147	360	245	335	167
Z3	874	420	196	360	343	335	167

Diagram for stroke/min.



For the accessories see page 26