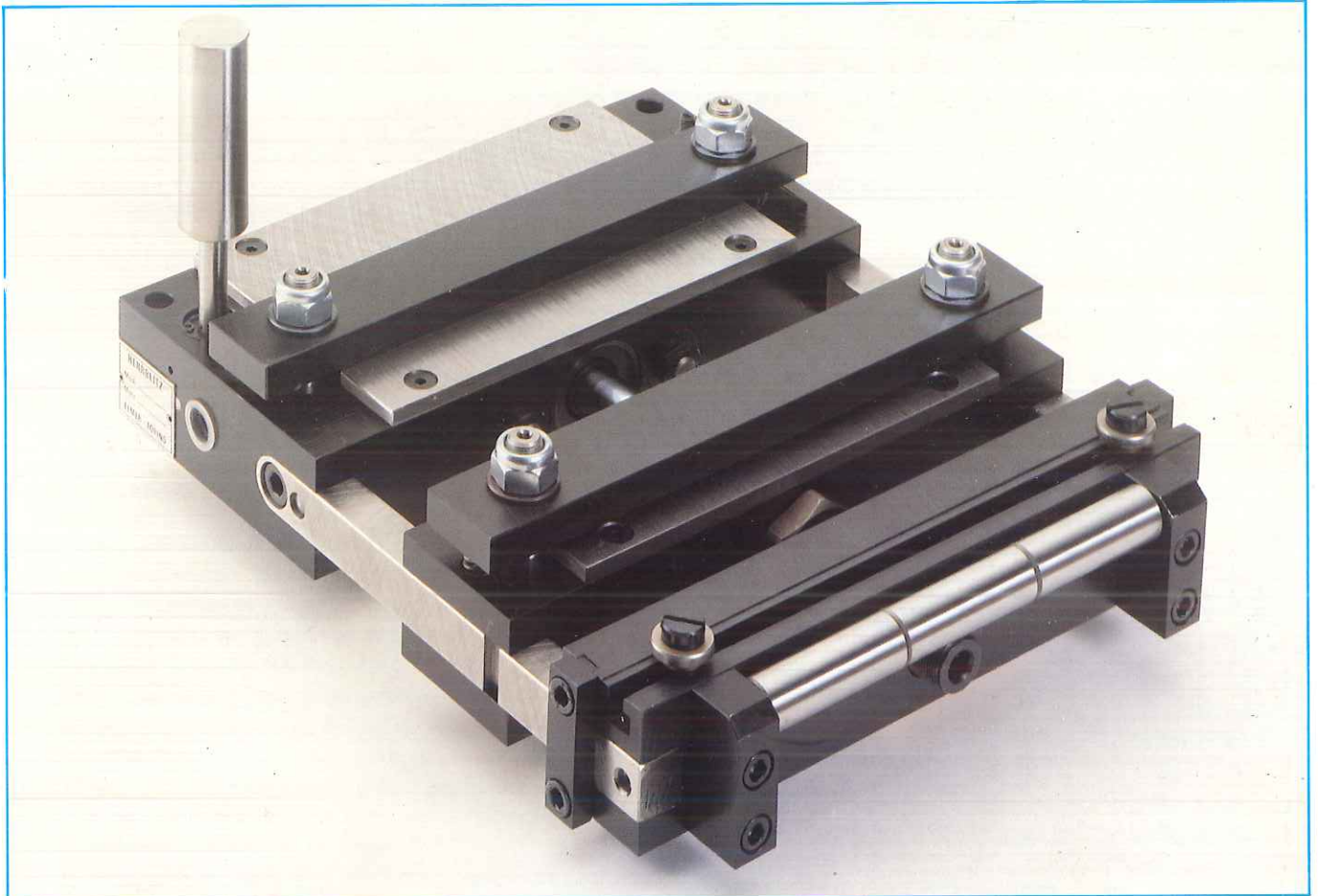


MIDDLE SERIES



SIMPLE INSTALLATION

They are mounted directly on the die set.
Two connecting screws are all that's necessary.
Actuating system by mechanical valve or by pneumatic or electric remote control.

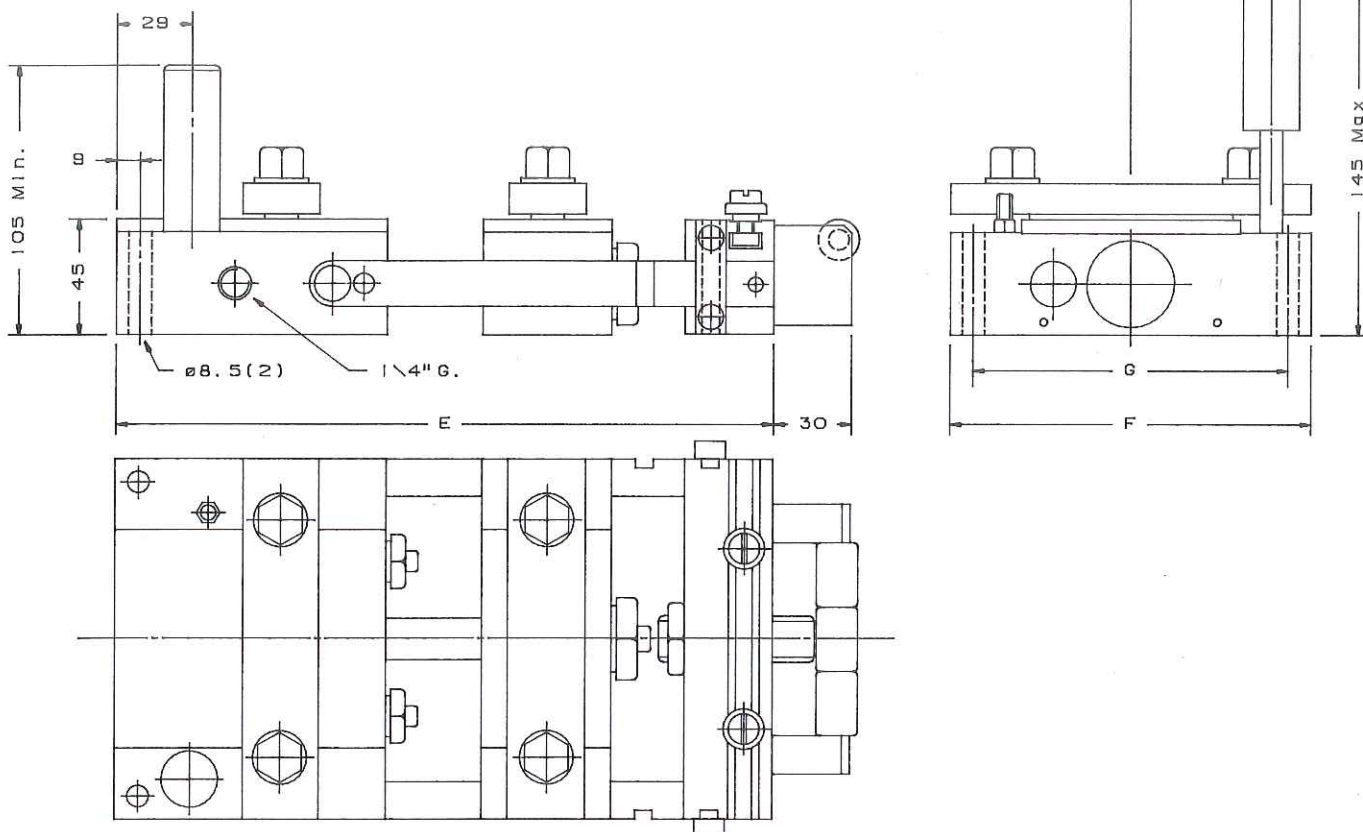
ACCURATE

All Herrblitz feeders are fitted with pneumatic shock absorbers for maximum feed accuracy at high feeding speeds.
Features include quiet operation and low air consumption.

COMPACT

No connections outside the feeder are required, except for the compressed air line.

The X series was provided for large production.
 In fact, although it is compact and may be mounted directly on the die, it is also very strong.
 The X series is fitted with a new patented valve, which increases its performances also at high speeds.



Technical features

Working pressure: 5 + 8 bar

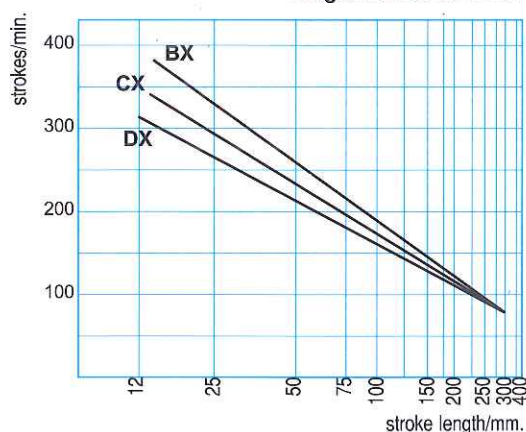
TYPE	Max. strip Width mm.	Stroke mm.	Strip thickness mm.	Cycles min.	Pressure of fixed clamps Kg.	Pressure of mobile clamps Kg.	Traction force Kg.	Consumption litres/min.	Weight Kg.
BX 50	75	50	2.20	260	70	158	41	64	6.2
BX 100	75	100	2.00	180	70	158	41	92	7.7
BX 150	75	150	1.80	150	70	158	41	115	9.2
BX 200	75	200	1.60	120	70	158	41	122	10.7
BX 250	75	250	1.50	90	70	158	41	115	12.2
CX 50	100	50	2.00	240	70	158	41	61	7.3
CX 100	100	100	1.80	170	70	158	41	87	8.8
CX 150	100	150	1.70	140	70	158	41	107	10.2
CX 200	100	200	1.60	110	70	158	41	112	11.7
CX 250	100	250	1.50	90	70	158	41	115	13.1
DX 50	150	50	1.60	230	70	158	41	59	9.6
DX 100	150	100	1.40	160	70	158	41	82	11.2
DX 150	150	150	1.20	130	70	158	41	100	12.7
DX 200	150	200	1.00	100	70	158	41	102	14.2
DX 250	150	250	1.00	80	70	158	41	103	15.7

The number of cycles/min. was calculated at 6 bar air pressure and with no material on the feeder.

Dimensional characteristics

TYPE	E	F	G	P
BX 50	255	140	122	54.5
BX 100	355	140	122	54.5
BX 150	455	140	122	54.5
BX 200	555	140	122	54.5
BX 250	655	140	122	54.5
CX 50	255	165	147	67
CX 100	355	165	147	67
CX 150	455	165	147	67
CX 200	555	165	147	67
CX 250	655	165	147	67
DX 50	255	215	197	92
DX 100	355	215	197	92
DX 150	455	215	197	92
DX 200	555	215	197	92
DX 250	655	215	197	92

Diagram for stroke/min.



For the accessories see page 26